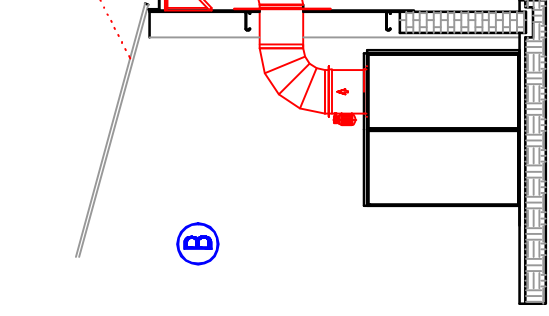
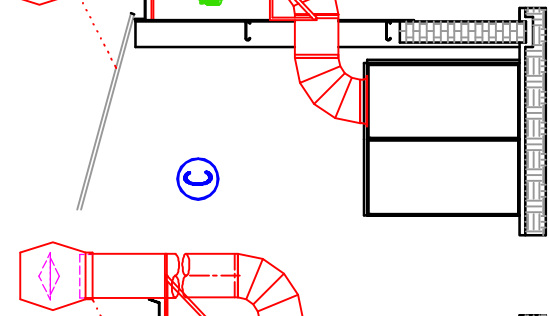


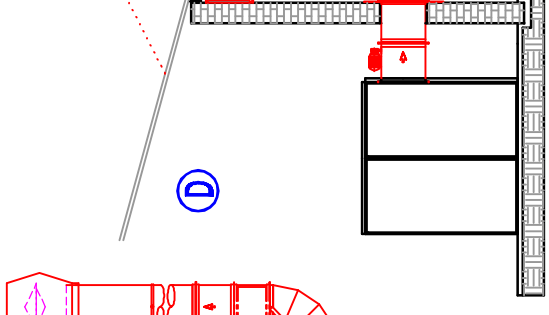
Through-Roof Kit.  
(Internal top-outlet fan)



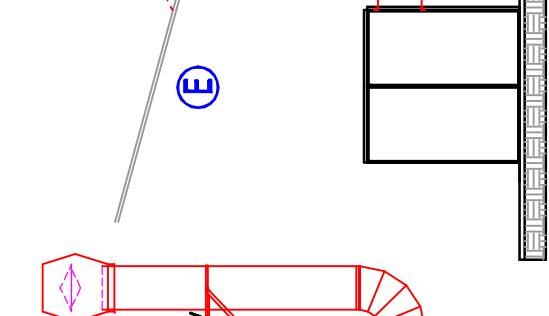
Through-Wall Kit.  
(Internal top-outlet fan)



Through-Wall Kit.  
(High-level external fan)



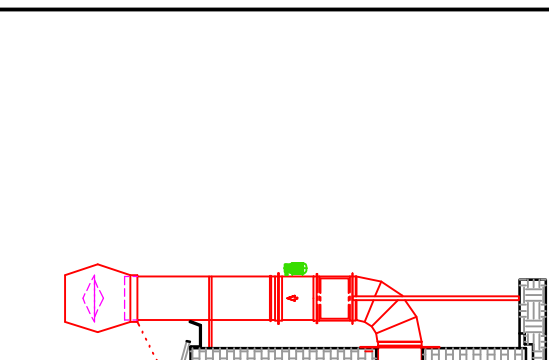
Through-Wall Kit.  
(Internal rear-outlet fan)



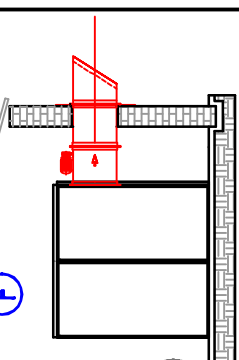
Through-Wall Kit.  
(External rear-outlet fan)

Description	Part No	A	B	C	D	E	F	G
Fan Flange	FLG	✓		✓	✓	✓(2)	✓	✓(3)
3m Straight Duct	3MDS	✓	✓	✓	✓	✓		
Adjustable RoofPlate c/w WeatherSkirt.	ARPT	✓						
Straight Connector	CON			✓				
Efflux Cowl	EFC		✓	✓	✓	✓		
Duct Inspection Kit	DIS			✓	✓	✓		
Bend Flange	BFLG			✓(2)				
90° Bend	B90		✓(2)	✓(2)	✓	✓		
Short Duct	HDD		✓	✓	✓	✓		
Wall Plate	WP		✓	✓	✓	✓		
Wall Bracket	BKT			✓				
Heavy-duty Wall Bracket	HDFSB		✓	✓	✓			
Fan Support Legs	FSL/1700							✓
Fan Support Legs	FSL/2500					✓		
Weather Taper c/w Bird Grill	WTBG						✓	
Guy Rope Set	GRST	Optional	Optional	Optional	Optional	Optional		

Kit Reference:	A	B	C	D	E	F	G
TRDKE	Optional	Optional	Optional	Optional	Optional		
TWDKVI		Optional	Optional				
TWDKVEH			Optional				
TWDKI				Optional			
TWDKVE					Optional		
TWDI						✓	
TWDKH							✓



Through-Wall Kit.  
(Internal rear-outlet fan)



Through-Wall Kit.  
(External rear-outlet fan)

C	REVISED & RE-ASSIGNED	23.02.02	DATE	23.02.02
B	REVISED & RE-ASSIGNED	23.10.18	DATE	23.10.18
A	ISSUED FOR MANUFACTURE		DATE	
REV DESCRIPTION			DATE	23.02.02
REV NO			DATE	23.02.02

Note: Local Authority Permission may be required to operate horizontal discharge ducting options.

Drawn By: [ ] Scale: [ ]  
 Check'd By: [ ] Date: [ ]  
 ID: STD\_DUCT\_ARR

Kit Reference: [ ]

Standard Ducting Arrangements

23.02.02  
 23.10.18  
 23.02.02